

This view shows the "SAND-GRABBER" under construction on the second day. Notice on the far end, on the beach side, the first block is almost covered.



**2nd Day of Construction**

Note the wave action. The bottom course is at least in 6" of water. The waves carry the sand thru the cores of the "SANDGRABBER", the back flow is restricted, the sand settles front and rear, also anchoring the structure, and the creation of a new beach has started.



**2nd Day of Construction**

We are now nearing completion. Behind the "SAND-GRABBER" 36" of sand has accumulated in the short span of one week and a shelf over 18" out in front. Notice how our new "SAND-GRABBER" does not toe scour and the permeable wall offers no resistance.



**8th Day of Construction**



**20th Day**

Observing from the top of the bluff, proof of the reclamation process of the "SANDGRABBER". Wind driven waves have caused this accumulation.



**50th Day**

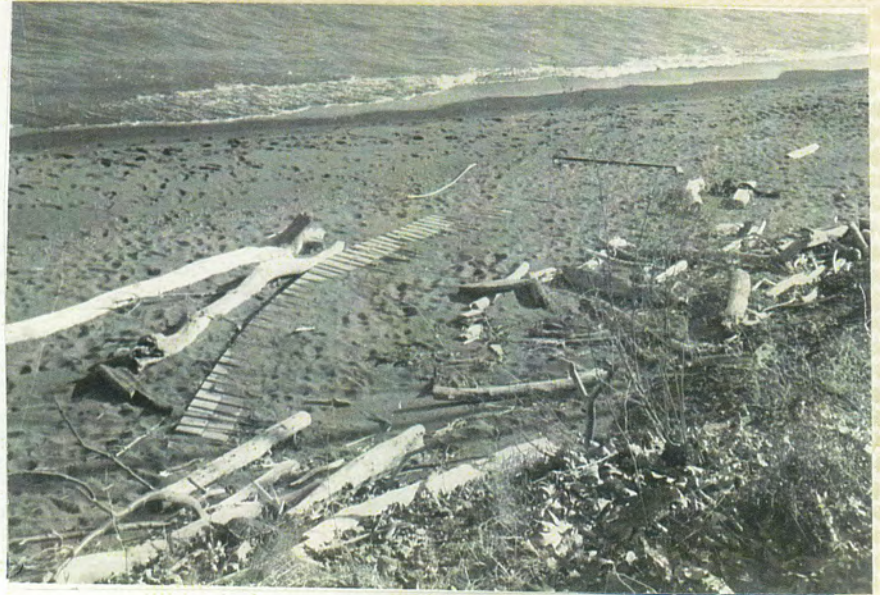
Compare this view with the above view to see the enormous amount of sand restored in only seven weeks. Erosion has stopped and the sand has almost completely engulfed the "SANDGRABBER".



**50th Day**

Observe the sand accumulation at the front of the "SANDGRABBER". There is over 80 feet at the front and 25 feet toward the bluff, and nearly 3 feet in depth, to protect the bluff from further erosion.

The last picture in this series now shows the Sandgrabber completely engulfed in sand, of which twenty feet had to be swept free to make the structure visible. Notice how the water line has moved out and away from the shoreline.



75th Day

